
Office Space to let - available for immediate occupation

Hiltongrove, 14 Southgate Road, N1 3LY

Landlord: Hiltongrove North One (Properties) Ltd

- Law Society Lease
- Purpose built business centre, close to mainline/tube/bus.
- Home to numerous creative businesses, the centre is a thriving hub with superb communal meeting areas.
- Situated on the **Islington/Hoxton** border with easy access to **Haggerston/Old St/Moorgate**.
- Offices are close to the busy parade of coffee shops and local restaurants popping up, with a *Tesco Express* supermarket and dry cleaners situated within the building.

Units available at: **£25.00 per sq ft**

(excluding business rates, service charge and utilities; electric/water)

Unit 16

883 sq ft

Rent	£22,075 Per Annum Exclusive
Business Rates (Est.)	£9.50 per sq ft (approx)
Service Charge (Est.)	£4.75 per sq ft

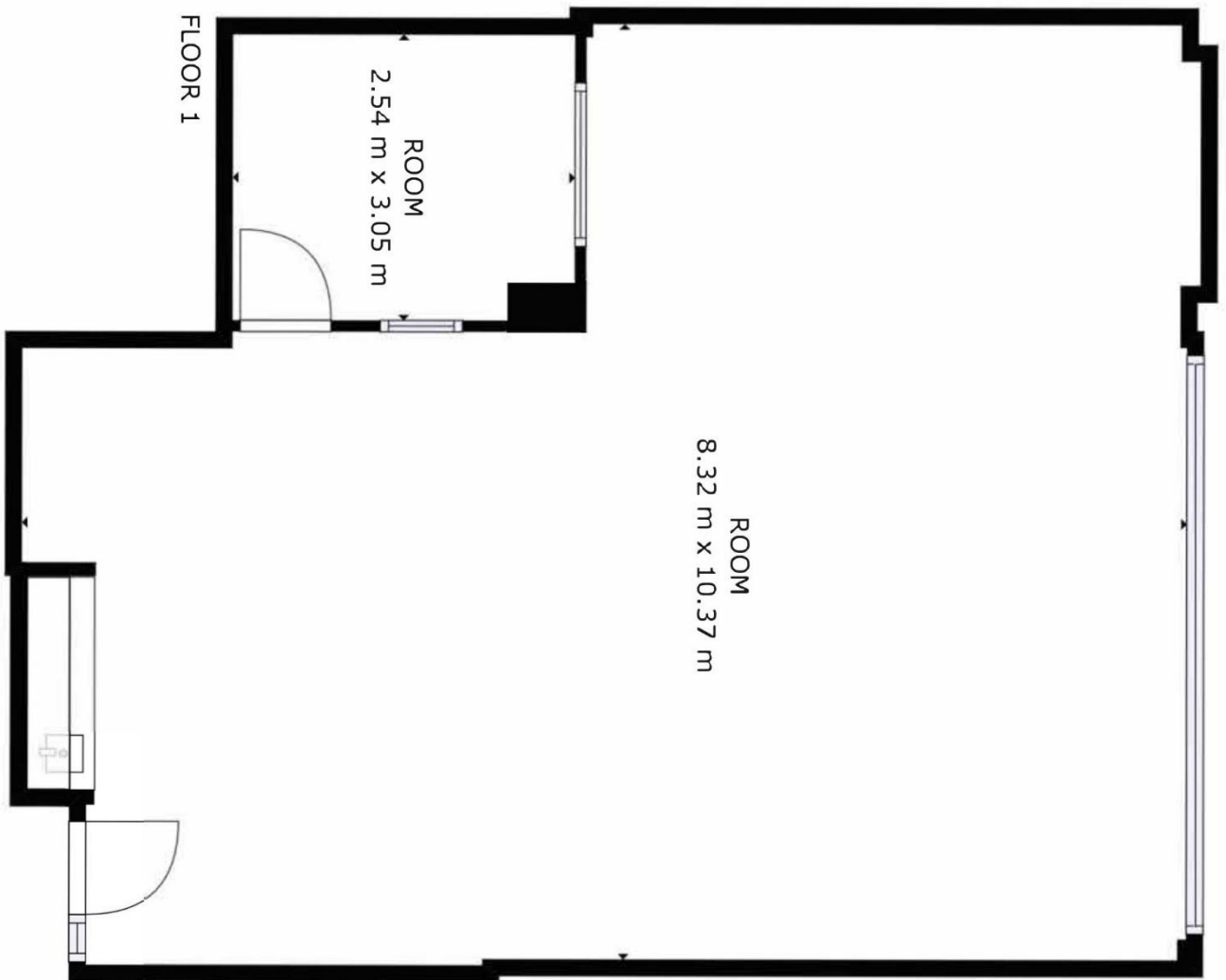
Contact: suzanne@hiltongrove.co.uk

HILTINGROVE

The Quant Building, Church Hill, London, E17 3AG
+ 44 (0)20 8521 9292

Unit 16

883 sq ft



GROSS INTERNAL AREA

FLOOR 1: 80 m²

TOTAL: 80 m²

SIZES AND DIMENSIONS ARE APPROXIMATE, ACTUAL MAY VARY.



